

# Ohio State University Extension Fact Sheet

## Entomology

1991 Kenny Road, Columbus, OH 43210-1090

---

### Clover Mite

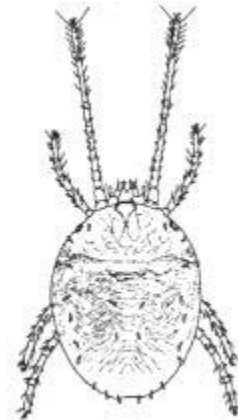


**HYG 2095-94**

**William F. Lyon**

| Common Name | Scientific Name               |
|-------------|-------------------------------|
|             |                               |
| Clover Mite | <i>Bryobia praetiosa</i> Koch |
|             |                               |

Clover mites sometimes invade homes in enormous numbers, in early spring and late autumn, overrunning floors, walls, drapes, window sills and furniture, even occasionally getting into beds and clothing. They may become troublesome in hospitals, nursing homes, apartments, food processing facilities, etc. If crushed, they leave a reddish stain quite noticeable on linens, curtains, walls and woodwork. They are a nuisance by their presence but do not bite humans or animals, transmit disease nor feed on household furnishings or pantry supplies. Skin irritation may be caused in sensitive persons. They live outdoors feeding on various plants.



## **Identification**

Clover mites are about 1/30 inch long (smaller than a pinhead), oval-shaped arachnids, reddish-brown to olive to pale orange or sometimes green-brown after feeding. They are eight-legged with the front pair of legs very long, protruding forward at the head. These front legs are sometimes mistaken as antennae or feelers. There are featherlike plates on the body and fan-shaped like hairs along the back edge of the body when viewed under a magnifying glass. Young are smaller and bright red. Also, eggs are bright red. Crawling mites are sluggish, slow-moving and normally invade the home where the sun is warmest at south, southwest and east side of the house.

## **Life Cycle and Habits**

Clover mites develop from unfertilized eggs (no males needed). Females lay about 70 eggs each, singly or in masses, in cracks and faults in concrete foundations, in mortar crevices, between the building walls, under loose bark of trees, and other protected places. Eggs lay dormant during the hot summer, hatching in early autumn when temperatures fall below 85 degrees F, followed by two nymphal or resting stages and the adult. Each stage lasts two to six days, and the life cycle is completed outdoors in one month with two or more generations per year. Mites may live one to seven months depending on climatic conditions. Most mites overwinter as eggs, but all life stages can be present. Overwintering eggs hatch in early spring.

Mites can be found infesting homes from November through June and again in the autumn months. They are sensitive to temperature changes (most active between 50 to 75 degrees F) and tend to move upward as the sun warms the surface above them. They may invade the home during the summer if host plants are dried up or cut off. Hosts include grasses (heavy feeding gives a silvered appearance), clover, dandelion, shepherd's purse, strawberry and iris, to name a few. Most heavy outbreaks occur in early spring in well-fertilized lawns growing close to the house foundation on the sunny side of the house; although in the fall, thousands of clover mites may congregate on vegetation around homes and on foundation walls, crawling into protected places as cold weather arrives. They hide under shingles, under siding, behind window and door casings or even indoors, becoming active again in the spring.

## **Control Measures**

### **Prevention**

Remove all grass and weeds (lush vegetation) from around the house foundation perimeter, leaving a bare strip 18 to 24 inches wide, especially on the south, southwest and east sides of the building. Mites will not cross bare, loose soil as readily as grassy surfaces touching the foundation. This bare strip can be planted with flowers such as geranium, zinnia, wallflowers, marigold, salvia, rose, chrysanthemum and petunia, or shrubs such as juniper, spruce, arborvitae, yew or barberry, which are unattractive to these mites deterring buildup and migration. An application of pea gravel in the strip will

also discourage mite invasion. Some apply bark mulch, stone or black plastic. Be sure to seal cracks and gaps or other points of entry with caulking compound, putty and weather stripping around foundations, windows and doors. Use tight fitting screens on windows and doors.

### **Mechanical**

It is often difficult to control large numbers of clover mites indoors. Use a vacuum cleaner with proper attachments to effectively collect live mites without crushing them. Dispose of the sweeper bag after collection by burning or taking to a garbage disposal far from the house. Mites can escape from the bag in the sweeper.

### **Insecticides**

It is best to use a perimeter spray barrier around the outside of the house during the mite invasion period. Outdoors, spray the foundation, exterior walls up to the bottom of the first floor windows, and a strip 10 to 20 feet wide from the foundation out into the grass. Spray the foundation and walls to point of runoff and the vegetation until it is thoroughly wet, which usually requires two to four gallons per 1,000 square feet, depending on the vegetation height and density. Materials labelled for this use include chlorpyrifos (Duration, Dursban, Empire, Engage, Tenure), cyfluthrin (Optem), diazinon, propoxur (Baygon) and pyrethrins (Exciter, Microcare, Pyrethrum, Pyrenone, Synerol). Also, fluvalinate (Mavrik, Yardex) is labelled for outdoor use only. Indoors, mites can be eliminated with aerosol or contact sprays of pyrethrins. Spot applications can be made to cracks and crevices at baseboards, around windows and doors and between windows and screens with propoxur (Baygon), diazinon or chlorpyrifos (Dursban). Before using any insecticides, be sure to read the label and follow directions and safety precautions.

---

This publication contains pesticide recommendations that are subject to change at any time. These recommendations are provided only as a guide. It is always the pesticide applicator's responsibility, by law, to read and follow all current label directions for the specific pesticide being used. Due to constantly changing labels and product registration, some of the recommendations given in this writing may no longer be legal by the time you read them. If any information in these recommendations disagrees with the label, the recommendation must be disregarded. No endorsement is intended for products mentioned, nor is criticism meant for products not mentioned. The author, The Ohio State University and Ohio State University Extension assume no liability resulting from the use of these recommendations.

---